



Gurukrupa College of Education & Research, Kalyan Feedback Analysis of B.Ed. Students (A.Y. 2018-20)

How do you rate the following?

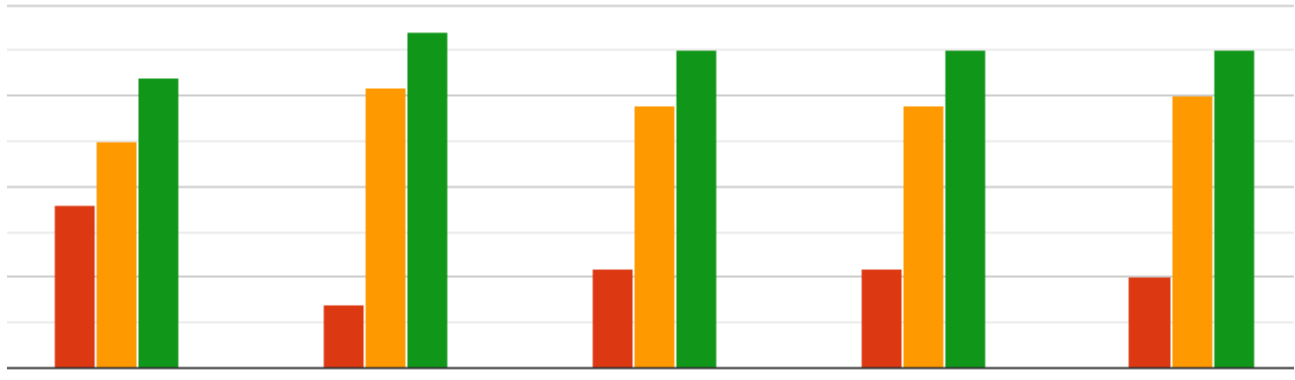
- 1) Command of teachers over the subject
- 2) Ability to teach beyond the syllabus
- 3) Use of ICT in teaching process
- 4) Teacher's ability to explain content knowledge
- 5) Integration of theory & practical in class



- 1) Regarding Command of teachers over the subject, out of 75 students, 31 students rated **Excellent & Very Good**, 12 students rated **Good** and 1 student rated **Average**.
- 2) Regarding Ability to teach beyond the syllabus, out of 75 students, 28 students rated **Excellent**, 33 students rated **Very Good** and 14 students rated **Good**.
- 3) Regarding Use of ICT in teaching process, out of 75 students, 27 students rated **Excellent**, 28 students rated **Very Good**, 18 students rated **Good** and 2 students rated **Average**.
- 4) Regarding Teacher's ability to explain content knowledge, out of 75 students, 32 students rated **Excellent**, 32 students rated **Very Good**, 11 students rated **Good**.
- 5) Regarding Integration of theory & practical in class, out of 75 students, 31 students rated **Excellent**, 28 students rated **Very Good**, 16 students rated **Good**.

How do you rate the following?

- Communication skill of the teachers
- Your overall experience with the college
- Experience of online teaching during the lockdown period
- Participation in Co-academic & Cultural Activities
- The assessment & evaluation process



- 6) Regarding Communication skill of the teachers, out of 75 students, 32 students rated **Excellent**, 25 students rated **Very Good**, 18 students rated **Good**.
- 7) Regarding overall experience with the college, out of 75 students, 37 students rated **Excellent**, 31 students rated **Very Good** and 7 students rated **Good**.
- 8) Regarding Experience of online teaching during lockdown period, out of 75 students, 35 students rated **Excellent**, 29 students rated **Very Good**, 11 students rated **Good**.
- 9) Regarding participation in co-academic and cultural activities, out of 75 students, 35 students rated **Excellent**, 29 students rated **Very Good**, 11 students rated **Good**.
- 10) Regarding the assessment and evaluation process, out of 75 students, 35 students rated **Excellent**, 30 students rated **Very Good**, 10 students rated **Good**.

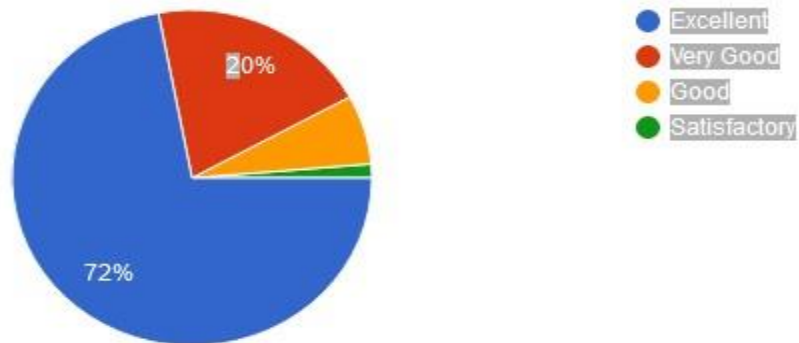
How do you rate our infrastructure?



- 1) Regarding Classroom facilities, out of 75 students, 26 students rated Excellent, 29 students rated Very Good, 17 students rated Good and 3 students rated Average
- 2) Regarding Washroom Facility, out of 75 students, 21 students rated Excellent, 30 students rated Very Good, 20 students rated Good and 4 students rated Average
- 3) Regarding Library facility out of 75 students, 31 students rated Excellent, 28 students rated Very Good, 15 students rated Good and 1 students rated Average
- 4) Regarding Drinking facility, out of 75 students, 22 students rated Excellent, 33 students rated Very Good, 17 students rated Good and 3 students rated Average

Help received from administrative staff during the course time

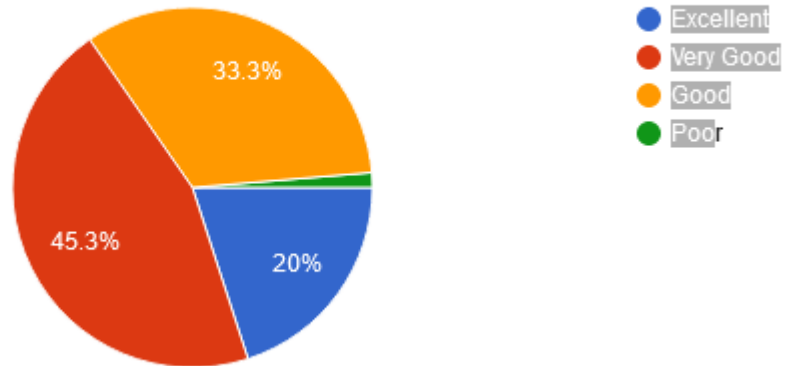
75 responses



Regarding help received from the administrative staff during the course time, out of **75** students, **72% (54 Students)** said **Excellent**, **20% (15 students)** said **Very Good**, **6.7% (5 students)** said **Good** and **1.3% (1 Student)** said **Satisfactory**.

Your experience with placement cell of the college:

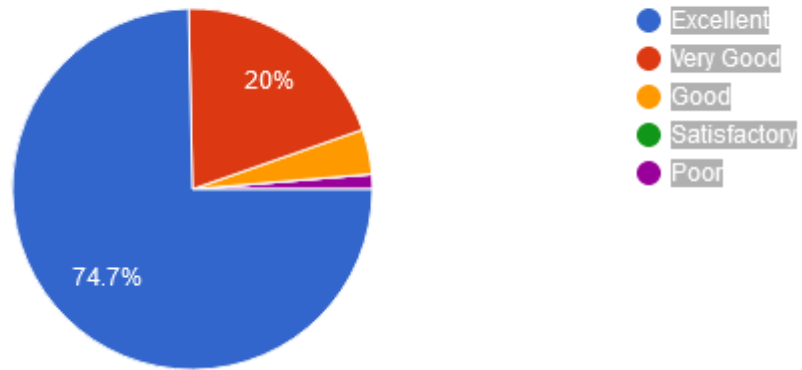
75 responses



Regarding Your experience with placement cell of the college, out of **75** students, **20% (15 Students)** said **Excellent**, **45.3% (34 students)** said **Very Good**, **33.3% (25 students)** said **Good** and **1.3% (1 Student)** said **Poor**.

Support received from the colleges during Lockdown period:

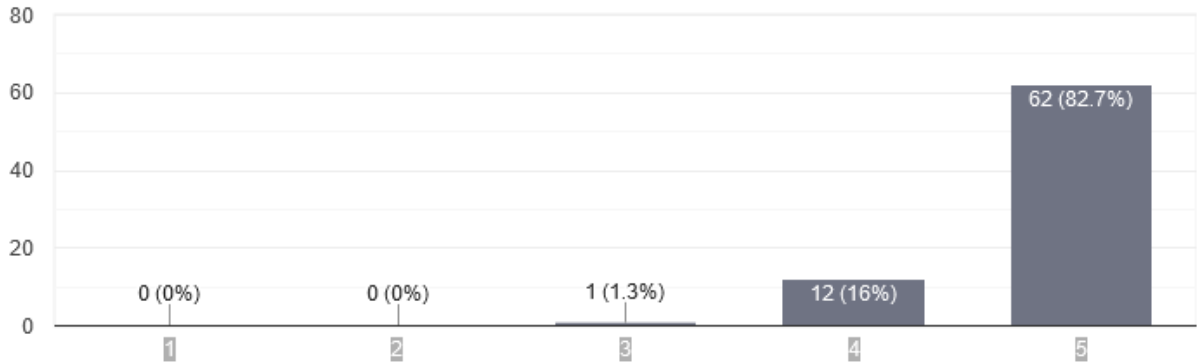
75 responses



Regarding Support received from the colleges during Lockdown period, out of **75** students, **74.70% (56 Students)** said **Excellent**, **20% (15 students)** said **Very Good**, **4% (3 students)** said **Good** and **1.3% (1 Student)** said **Poor**.

How do you rate assistance received from the college during the online examination?

75 responses



Regarding Assistance received from the college during the online examination, out of **75** students, **82.70% (62 students)** rated **5**, **16% (12 students)** rated **4** and **1.30% (1 student)** rated **3**.